

Rodney B. Cox Elementary School
School Zone Redesign



Quantities

Item	Quantity	Signs to order
School Speed Limit 15 w/ Beacon	4	S5-1 and FTP-38-22, add beacon
School Crossing Ahead	7	S1-1 and W16-9P
School Crossing w/ Arrow	7	S1-1 and W16-7P(L)
End School Zone	3	S5-2
School Pavement Marking	4	
Proposed Crosswalk	3	

General Notes

- All school signs must be yellow-green in color.
- Suggested crosswalks should be the special emphasis type.
- All indicated locations are approximate and may need to be adjusted for constructability. Standard minimum distances are noted where appropriate.
- Proposed school signs and pavement markings are to replace existing signs and pavement markings. Proposed crosswalks are in addition to currently existing crosswalks. No crosswalks are proposed to be removed.
- The following link has information on the names of the school zone signs used:
[Figure 7B-1 Long Description - MUTCD 2009 Edition - FHWA \(dot.gov\)](#)

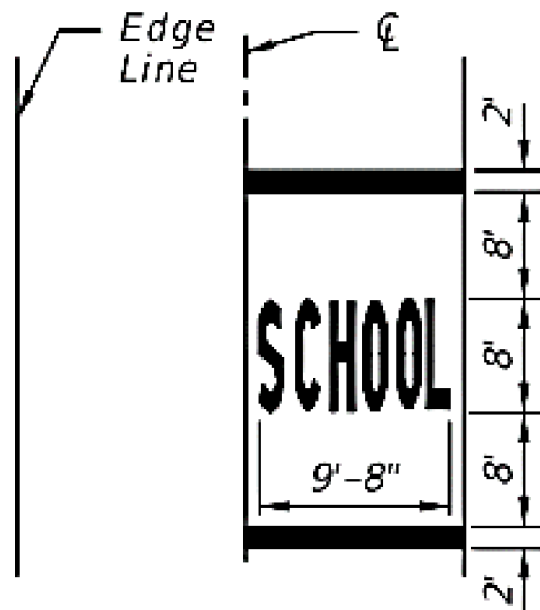


Figure 1: Standard School Zone Pavement Marking Details

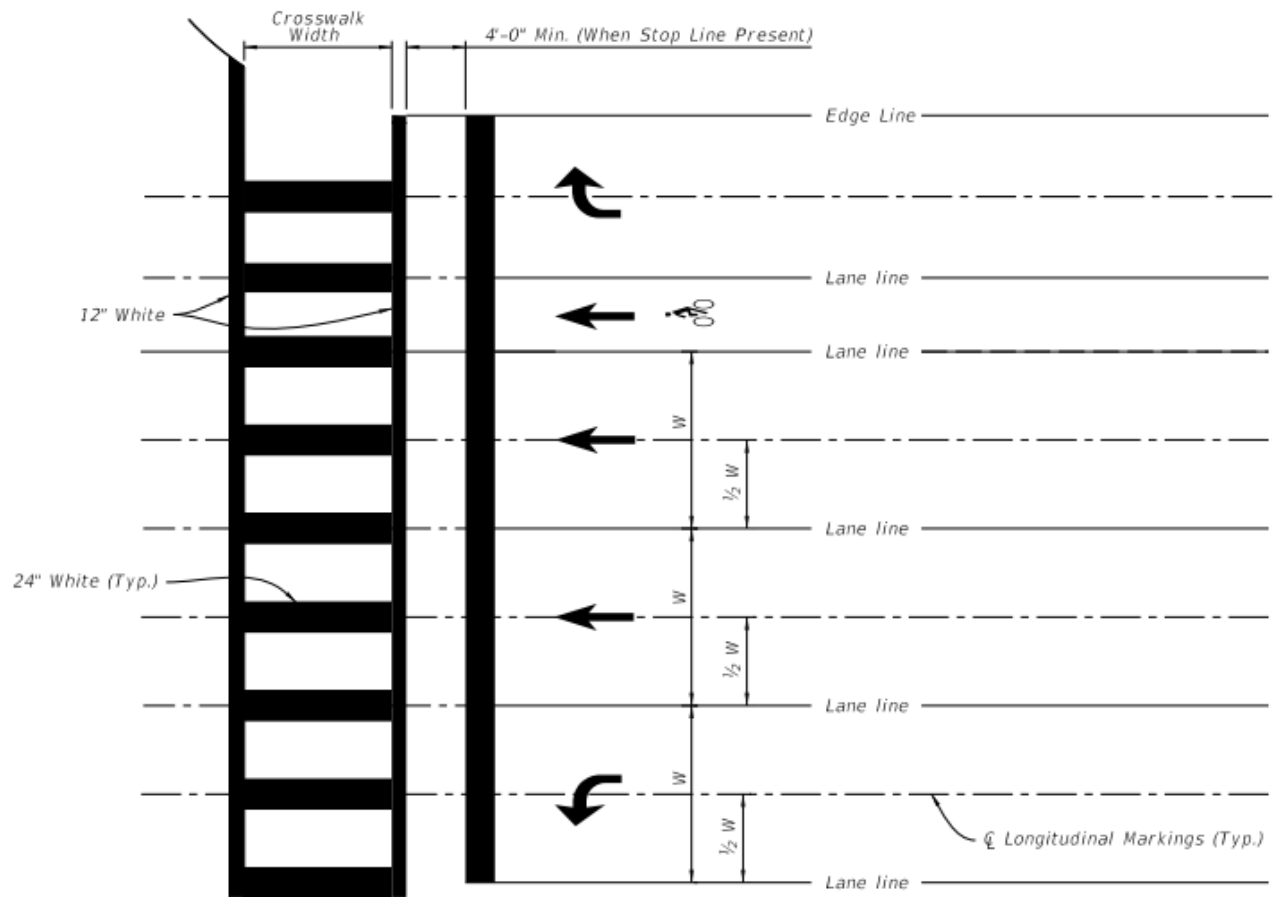
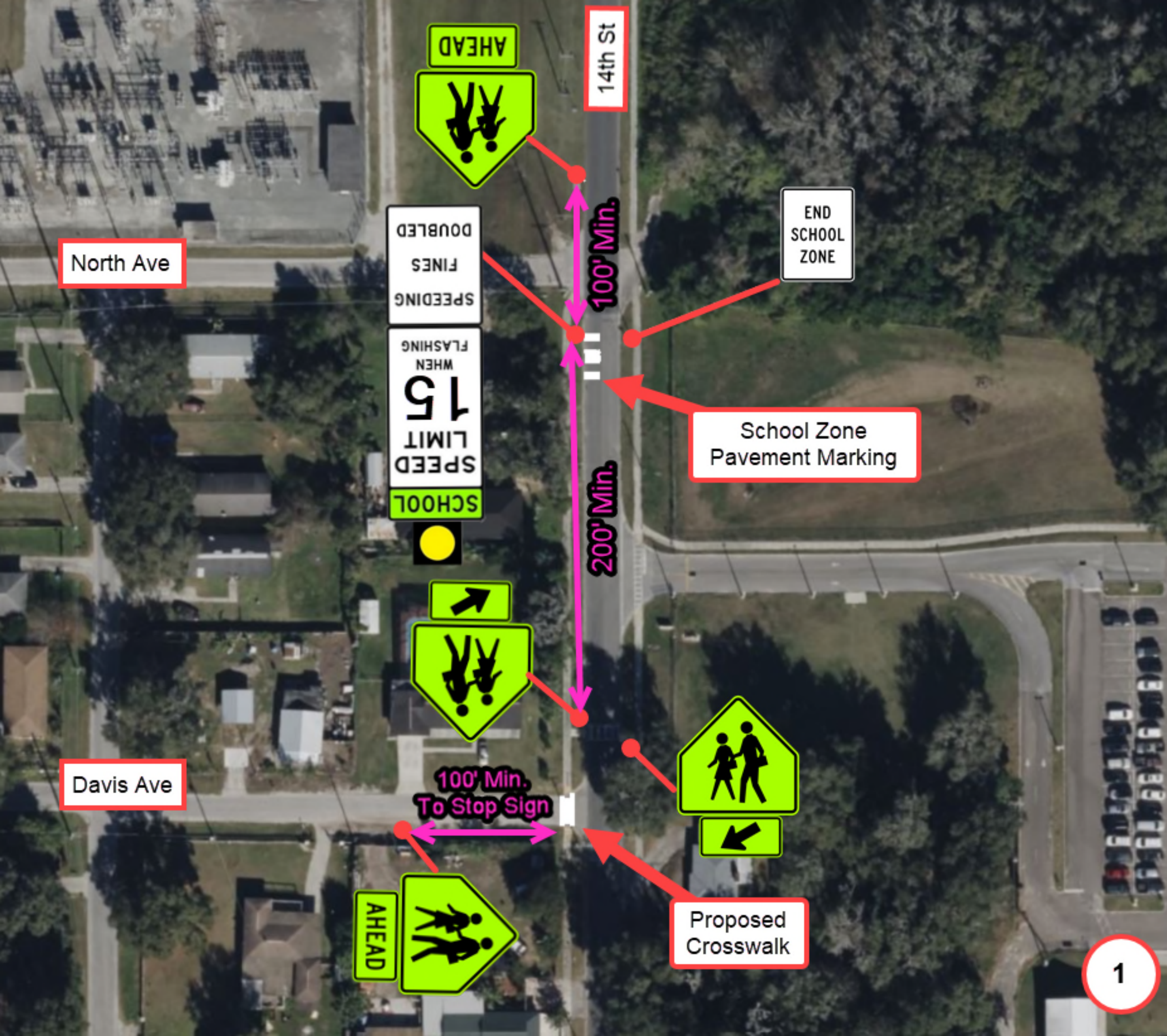


Figure 2: Special Emphasis Crosswalk Details

Figure 1: Standard School Zone Pavement Marking Details



North Ave

14th St

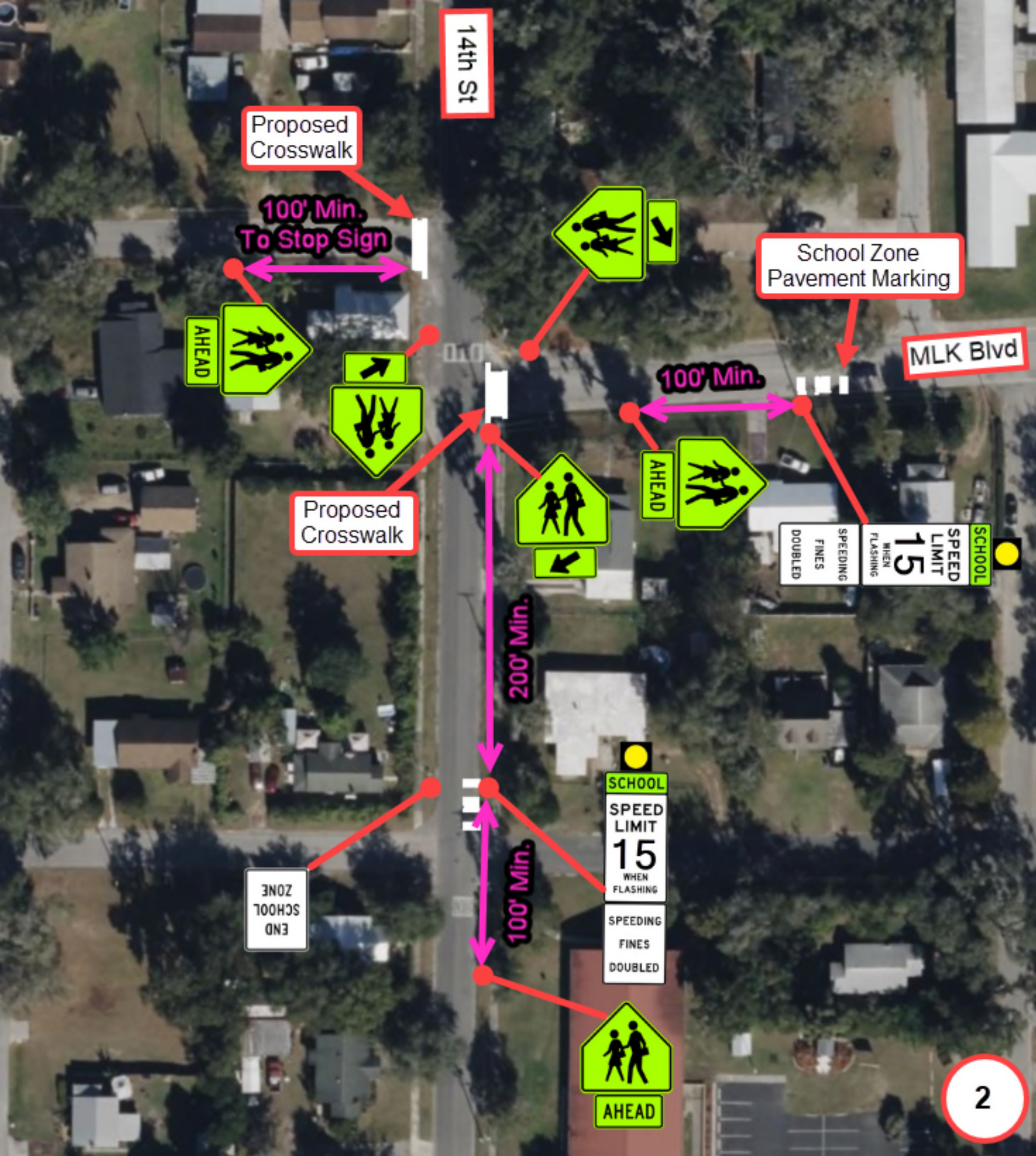
END SCHOOL ZONE

School Zone Pavement Marking

Davis Ave

100' Min. To Stop Sign

Proposed Crosswalk



14th St

Proposed Crosswalk

100' Min.
To Stop Sign

School Zone
Pavement Marking

MLK Blvd

Proposed Crosswalk

100' Min.

SCHOOL
SPEED
LIMIT
15
WHEN
FLASHING
SPEEDING
FINES
DOUBLED

200' Min.

SCHOOL
ZONE
END

SCHOOL
SPEED
LIMIT
15
WHEN
FLASHING
SPEEDING
FINES
DOUBLED

100' Min.

AHEAD

